



- INSPIRATION GUIDE FOR BLACKSMITHS AND METAL FABRICATORS

# BYG<sup>TM</sup> 5 STEPS TO BUILD YOUR GRATING

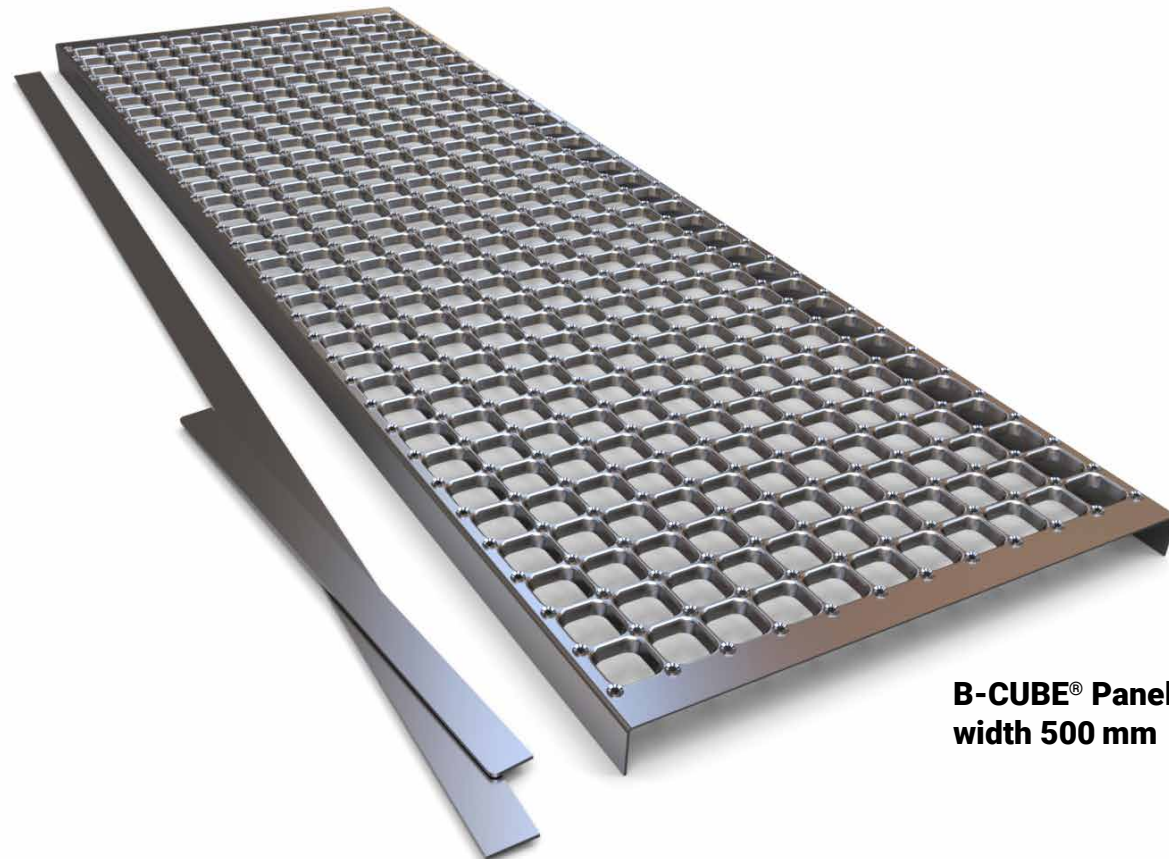
**BUILD YOUR GRATING**

- 
- 1** Choose the B-CUBE® W500
  - 2** Insert reinforcements and edging bars
  - 3** Weld single panels together
  - 4** Cut-out and weld
  - 5** Ready to install

- 1** Choose the B-CUBE® W500
- 2** Insert reinforcements and edging bars
- 3** Weld single panels together
- 4** Cut-out and weld
- 5** Ready to install

## Choose the B-CUBE® W500!

All you need to get started is the CUBE® grating panel and some flat bars, a welding machine and some experience in tack welding.



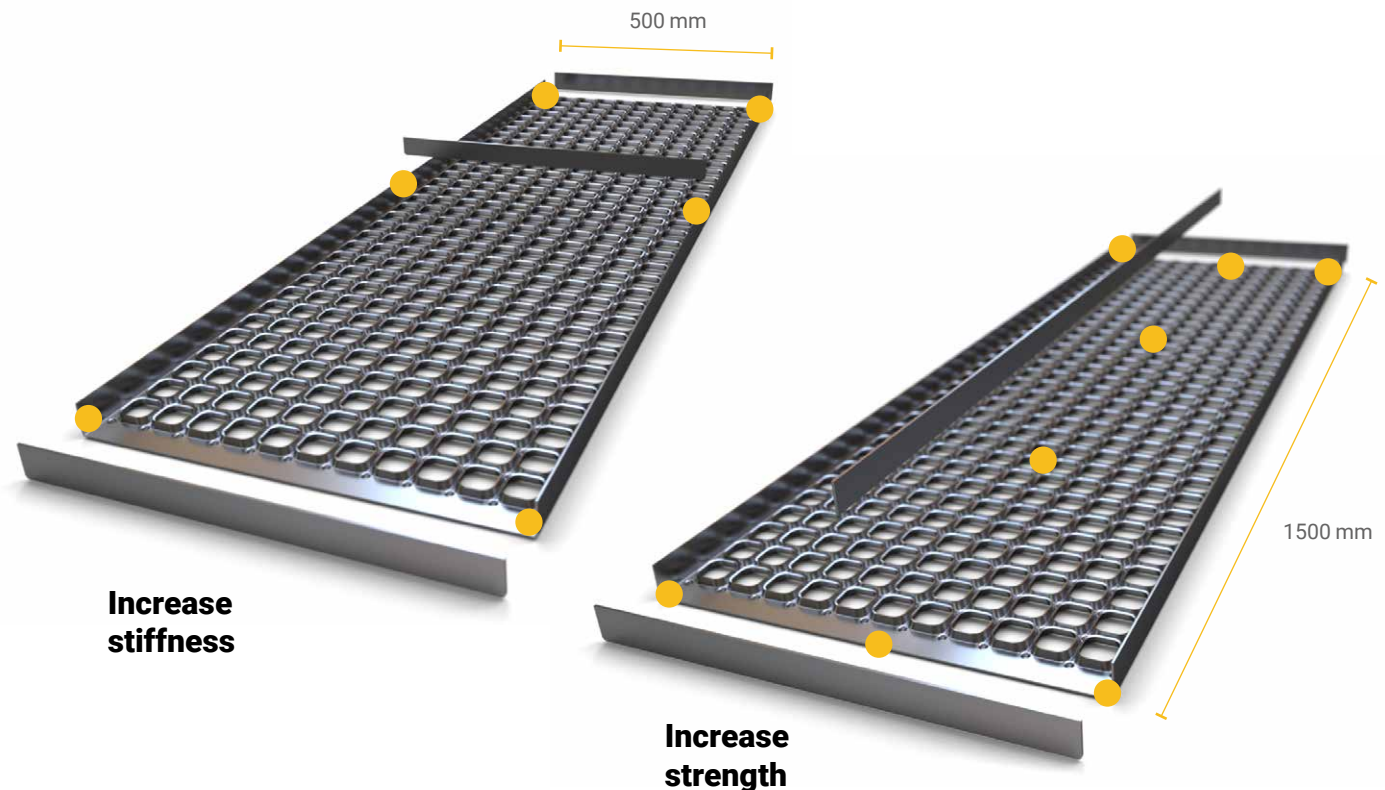
**B-CUBE® Panel  
width 500 mm**

- 1 Choose the B-CUBE® W500
- 2** Insert reinforcements and edging bars
- 3 Weld single panels together
- 4 Cut-out and weld
- 5 Ready to install

## Insert reinforcements and edging bars

Tack weld the edging bars to the ends and simply insert the flat bars into the U-formed profiles on the backside of the CUBE® to reinforce the grating or stiffen the top flange, and tack weld the flat bar to the CUBE® for every 500 mm.

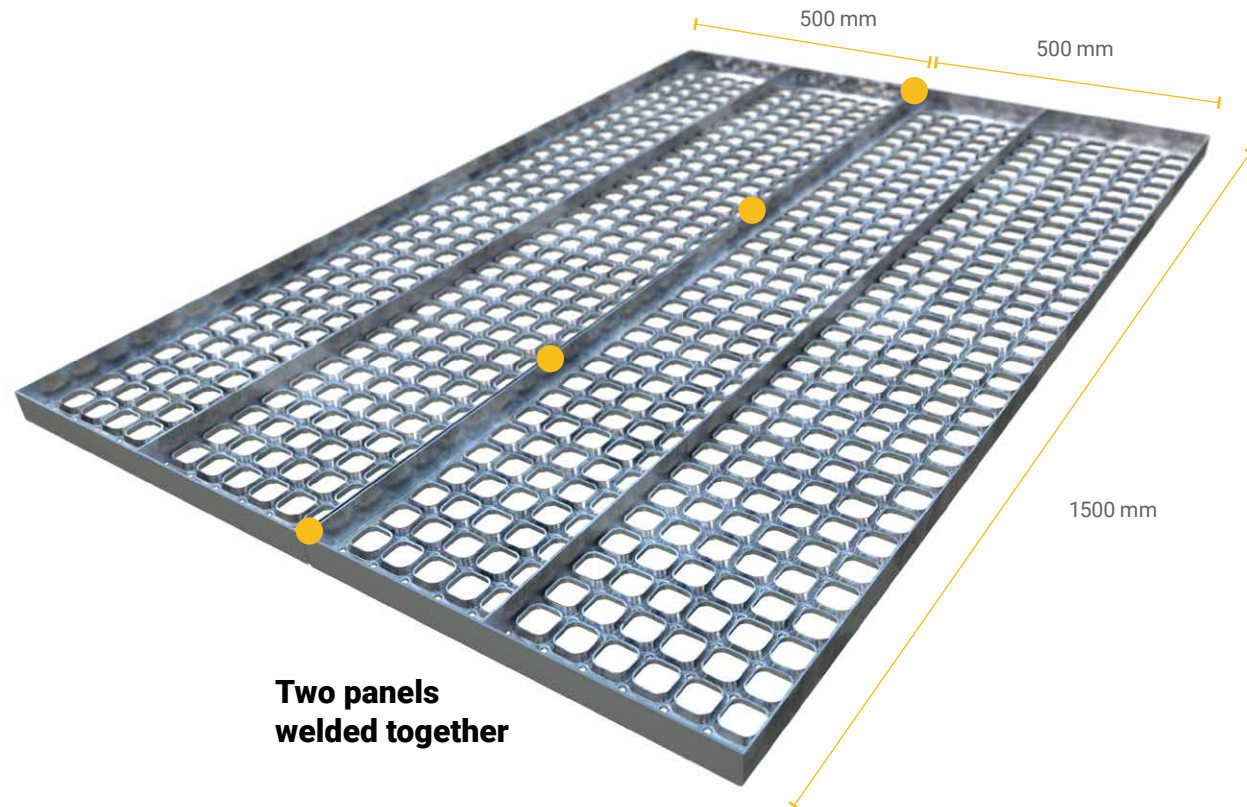
Request reinforcements and welding guidance at you nearest PcP. office.



- 1** Choose the B-CUBE® W500
- 2** Insert reinforcements and edging bars
- 3** Weld single panels together
- 4** Cut-out and weld
- 5** Ready to install

## Weld single panels together

You can weld multiple panels together to form larger gratings, simply by tack welding for every 500 mm on the backside.

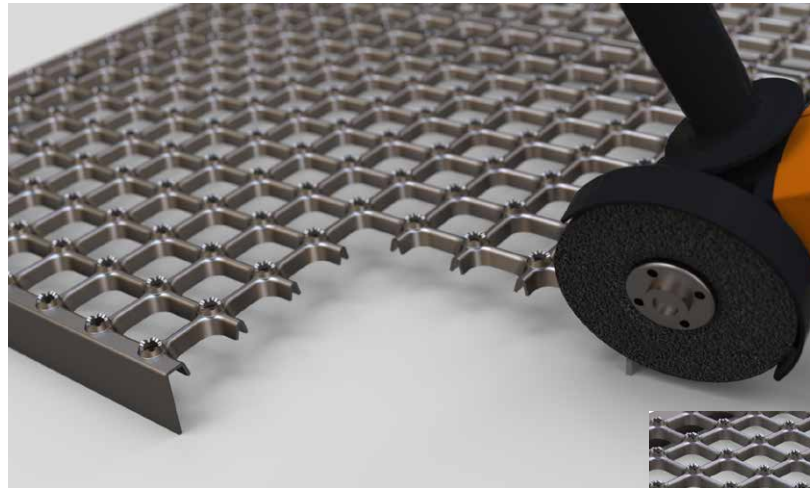


**Two panels welded together**

- 1** Choose the B-CUBE® W500
- 2** Insert reinforcements and edging bars
- 3** Weld single panels together
- 4** Cut-out and weld
- 5** Ready to install

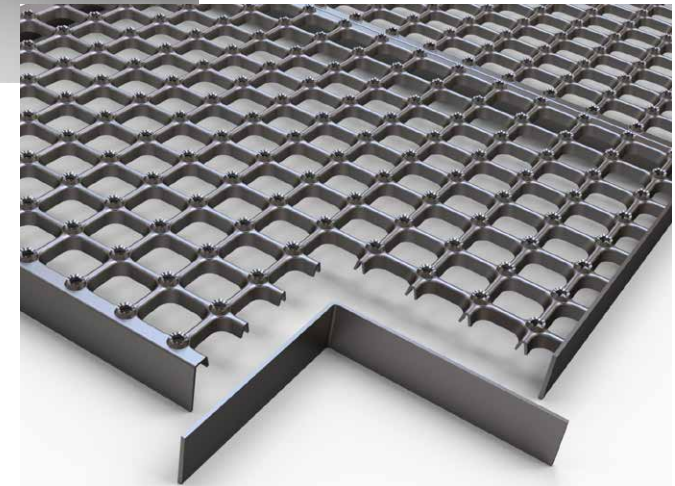
## Cut-out and weld

Make cut-outs using a grinder and finish by tack welding edging bars to adapt the grating to the application.



**Use grinder to cut**

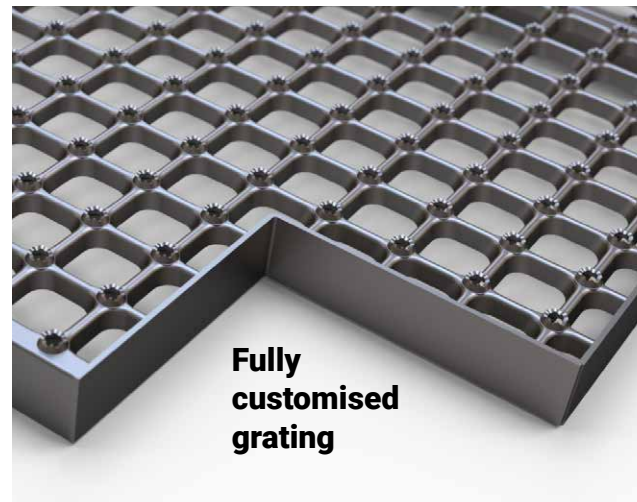
**Tack weld edging bars**



- 1** Choose the B-CUBE® W500
- 2** Insert reinforcements and edging bars
- 3** Weld single panels together
- 4** Cut-out and weld
- 5** Ready to install

## Ready to install

You are now ready to proceed with the desired surface treatment and, finally, install the fully customised grating on the structural layout.



**Use fixing clamps to attach the gratings to the construction**

